

2004 Legislative District Final Map

The Legislative District Map was adopted by the Commission on August 14th, 2002 to replace the Interim 2002 Legislative Districts used in the 2002 elections. The map has been submitted to the US Department of Justice (DoJ) for final approval. The DoJ has 60 days from receipt of the submission to approve, reject, or question the map's compliance with Sections 2 and 5 of the Voting Rights Act.

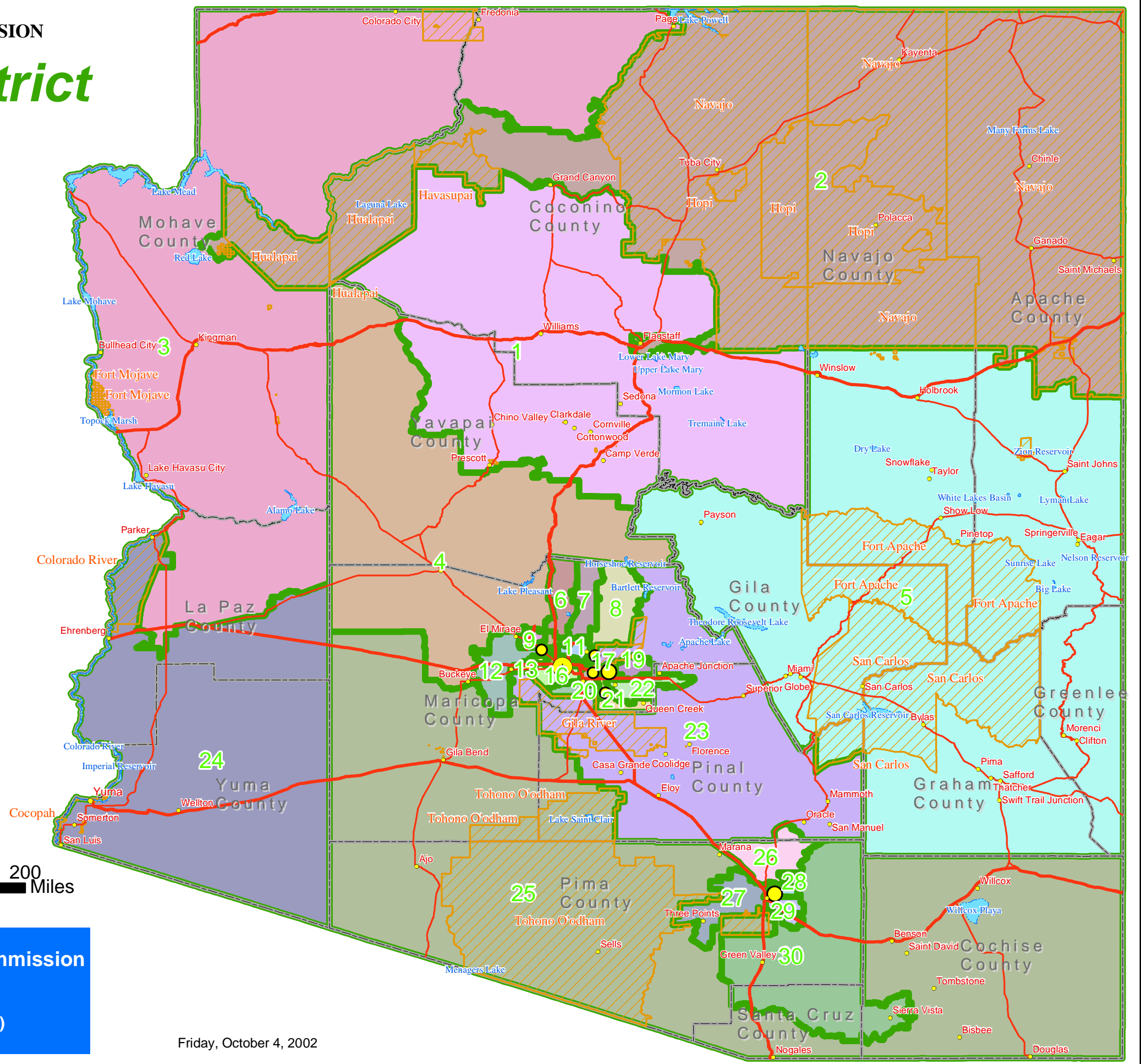
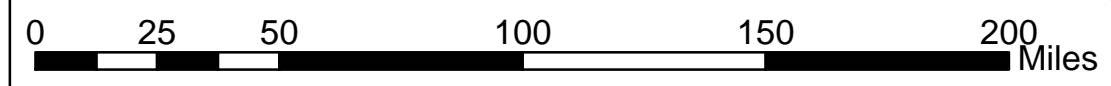
Legend

Cities (by Population)

- ≤ 50000
- 50001 - 75000
- 75001 - 150000
- 150001 - 500000
- 500001 - 3500000

- Highway
- Interstate or Freeway
- Rivers and Streams
- American Indian Areas
- County Boundaries

DISTRICT	Color
1	Light Purple
2	Dark Purple
3	Light Pink
4	Light Blue
5	Light Cyan
6	Light Green
7	Light Yellow
8	Light Orange
9	Light Purple
10	Light Brown
11	Light Blue
12	Light Green
13	Light Yellow
14	Light Orange
15	Light Red
16	Light Green
17	Light Brown
18	Light Green
19	Light Purple
20	Light Green
21	Light Orange
22	Light Green
23	Light Purple
24	Light Blue
25	Light Green
26	Light Pink
27	Light Purple
28	Light Cyan
29	Light Purple
30	Light Green



Map Produced For:

Arizona Independent Redistricting Commission

1400 West Washington Street, Suite B-10
 Phoenix, Arizona 85007
 (602) 364-1350 or (866) 864-7569 (Toll Free)
www.azredistricting.org